

Competition Framework



Youth Sport Trust

Guidance Notes

Who is involved

The competition review has been undertaken by BADMINTON England in consultation with the Schools and Youth Board, County Associations and in line with recommendations from a grading structure project commissioned by the Competitions & Events Department. The former English Schools Badminton Association was assimilated into the NGB in 2003 and therefore the integration of school and club competition pathways was not problematic. The framework is a holistic model due to consultation with a variety of contributors from across the organisation, and as such serves in pursuing BADMINTON England's goal of being a well organised sport providing the inspiration and pathways from beginner to medal winner.

National contacts

- Emily Weller, National Schools Officer
E-mail: emilyweller@badmintonengland.co.uk Tel: 01908 268400
- Julia Strong, Club Support Manager
E-mail: juliastrong@badmintonengland.co.uk Tel: 01908 268400

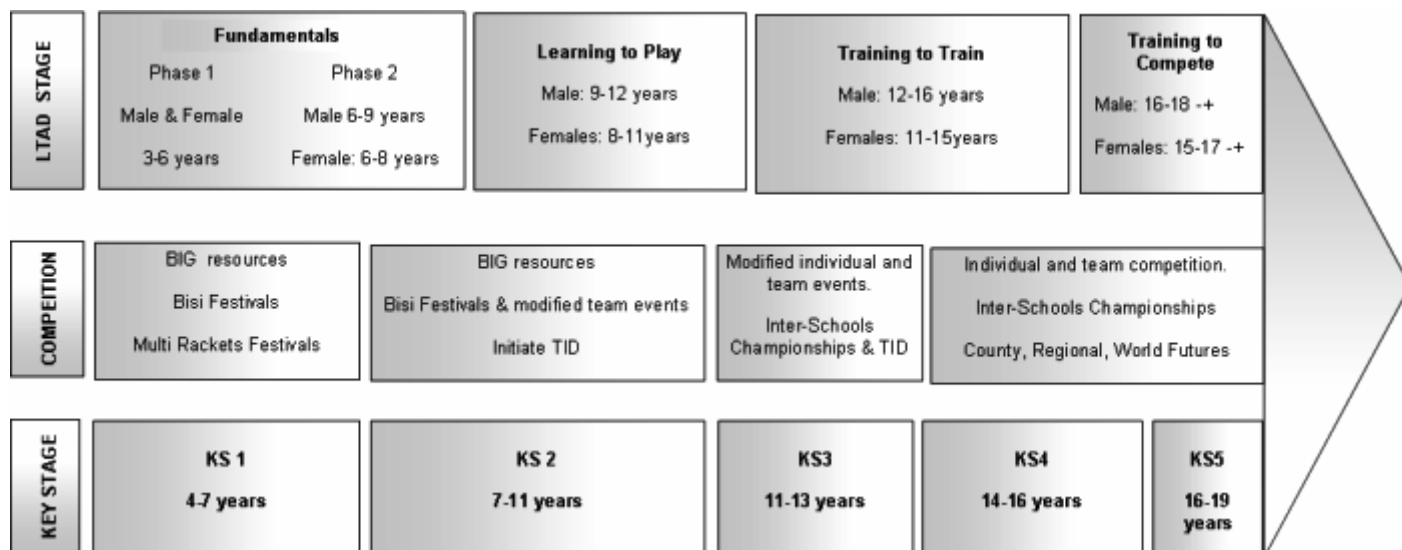
Benefits

The competition review used the National Competition Framework as a catalyst, helping BADMINTON England to emphasise a clear pathway for the development of the game, from generic racket skills through to match play, with each age group aligned to a structured and appropriate level of competition. In addition, BADMINTON England has used the review to assess how national age group competitions can be used as a tool to develop the talents of young players.

Key messages

- A programme designed to take young people through from BIG (Badminton is Great) and Bisi related activities to lifelong involvement in badminton.
- The framework is grounded in activities and modified games to develop generic racket skills which later develop into individual and team competitions, culminating in the development of match play skills.
- The model develops leadership skills, in the form of the Junior Helper Award, and organisational qualities, through the Tournament Organisers Scheme, alongside the technical skills of badminton.

The framework



Delivery and supporting resources

All partnership development managers (PDMs) and Competition Managers (CMs) have received a leaflet outlining the processes required to host the various events for young people from Key Stages 1-4. In addition, Competition Managers have been provided with a CD-Rom containing templates for the various competition formats and rules of the game, as well as logistical guidance regarding how best to cater for various numbers of children according to facility size and court time available. The CD-Rom also provides information regarding additional resources which BADMINTON England offer, such as BIG packs and the new Bisi activity cards.

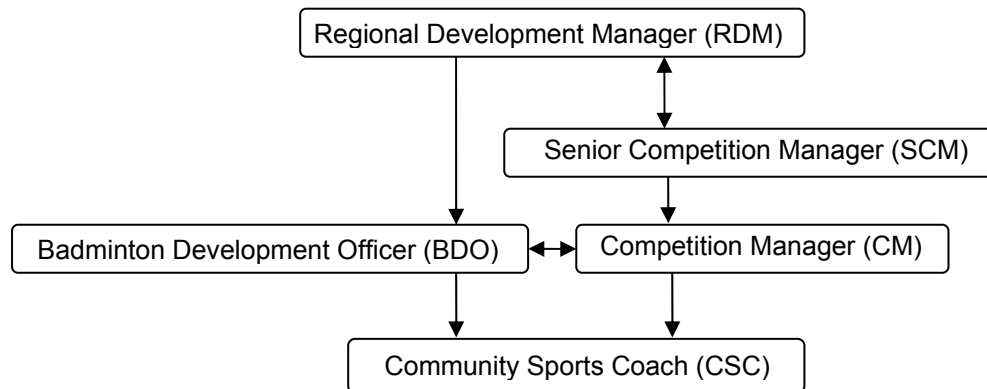
Regional Development Managers (RDMs), Badminton Development Officers (BDOs) and/or county officials will be a point of contact to offer additional advice in the planning of competitions whilst facilitating the essential exits routes from school competition into badminton clubs through the continued development of school club links.

BADMINTON England has established a working group investigating the development of more opportunities for disabled players within our game. Pan-disability events are currently being piloted around the country.

Working with Competition Managers

Key Points of Planning for Counties

To ensure the role of the Competition Managers complement the existing strategic work of BADMINTON England we propose the following communication process:



Across each of the areas in which the Competition Managers will be operating there are Regional Development Managers (RDMs) and Badminton Development Officers (BDOs) in post. These officers will provide the essential link to BADMINTON England Silver Clubs - the ideal exist route for young people from school based competition. The RDMs and BDOs will be able to provide Competition Managers with a list of the affiliated School Sport Partnerships and schools in their area. These officers will also be able to link the Competition Managers to Community Sports Coaches in their area.

How can SCMs and CMs work with us?

By working with our Regional Managers and County Officers, SCMs and CMs can support BADMINTON England's national framework by promoting badminton festivals, bonanzas, competitions and guiding participants to the appropriate exit routes.

Existing Data Sources

Contact	Email	Link to BADMINTON England website
Emily Weller National Schools Officer	emilyweller@badmintonengland.co.uk	Young People & Schools http://www.badmintonengland.co.uk/text.asp?section=000100010022&itemTitle=Young+People+%26+Schools#
Julia Strong Club Support Manager	juliastrong@badmintonengland.co.uk	Counties, Leagues & Clubs http://www.badmintonengland.co.uk/text.asp?section=000100010023&itemTitle=Counties%2C+Leagues%2C+Clubs
Darren Parks Head of Competition & Events	darrenparks@badmintonengland.co.uk	Events http://www.badmintonengland.co.uk/text.asp?section=000100010019&itemTitle=Events

Key Work for SCMs / CMs in the next 12 months

The priority areas within the framework to be developed for Key Stage 1 and 2 children are intra-school, inter-school and partnership based Bisi festivals, which are ideal for incorporating young leaders and Step into Sport (SiS) volunteers. The priority for Key Stage 3 and 4 is to promote and organise the SSP and County round of the National Inter-Schools Badminton Championships, and mirror the match format for intra-school events.

Primary Framework

Competition framework descriptor	Recommended competition	Level and location	Scheduling	Next steps in competition
<p>Key Stage 2: 7-9 years</p> <ul style="list-style-type: none"> • Multi-skill festivals (termly) • Off school site • Theme based • Possible early specialisation in some sports through NGB and club structure 	<p>Bisi Festivals / Pan Disability Festivals Fun activities, designed to provide success for all. Bisi Festivals are easy to run and take little more than one and a half hours so can be incorporated into an after school club.</p> <p>Racket Skills Festivals The Festivals encompass a variety of rackets skills utilised in badminton, tennis, squash and table tennis.</p>	<p>The Festivals are aimed primarily at Key Stage 2, however, the activities can be simplified and used with Key Stage 1.</p> <p>Between primary school clusters, hosted by secondary school, sports college, leisure centre, badminton club. (Ideally four courts)</p> <p>Aimed at Key Stage 2. Between primary school clusters, hosted by primary/secondary school, sports college, leisure centre, badminton club.</p>	<p>Twice a year as and when appropriate to school</p> <p>Three times a year</p>	
<p>Key Stage 2: 9-11 years</p> <ul style="list-style-type: none"> • Multi-sport competition (six-week block rotation) • Central venue leagues • Coaching and competition based on primary, secondary or club sites 	<p>Bonanzas / Pan-Disability Bonanzas One-day or weekend event. Provides players with the environment to have fun whilst competing within a structured event.</p>	<p>Hosted by primary/secondary school, sports college, leisure centre, badminton club.</p> <p>Ideally four courts but could use two and fewer options/players involved.</p>	<p>Twice a year as and when appropriate to school</p>	<p>Youth Games (run by CSP)</p> <p>Years 6 & 7</p> <p><u>Format:</u> 1 Boys Doubles 1 Girls Doubles 2 x Girls Singles 2 x Boys Singles To form part of larger team (see KS3/4).</p>

Primary Organisers Sheet

Competition age group	Format	Facilities	Organisers/helpers	Equipment	Resources available from NGB to support
Key Stage 1: 5-7 years Lower Key Stage 1 ↓ Higher Key Stage 1	As per BADMINTON England's resources - generic activities based around primary movement patterns, batting, striking, etc - if appropriate earlier activity still to be used.	Ideally four courts within a schools, badminton clubs, or leisure centre	Young Leader Competition Manager Badminton Development Officers (BDOs)	BADMINTON England Development Bag (contains a variety of equipment including rackets, shuttles, Quiknet, fluff balls, ribbon tail balls, hoops etc)	Bisi Festival downloads available from BADMINTON England website BIG Phases 1 and 2 Bisi Activity Cards (Pack A)
Key Stage 2: 7-9 years Also 9-11 years if appropriate	Rackets Skills Festivals: The Festivals encompass a variety of rackets skills utilised in Badminton, Tennis, Squash and Table Tennis.	School, badminton club, leisure centre	BADMINTON England Racket Skills Tutor Young Leader Competition Manager Badminton Development Officers (BDOs)	BADMINTON England Development Bag Badminton, Tennis, Squash rackets, Table Tennis bats Nets, Table Tennis tables, rebound boards Shuttles, Tennis balls, Squash balls, Table Tennis balls	Festival activities available from either of the four sports Additional activity ideas through Bisi Activity Cards (Pack A)
9-11s if competent in the 7-9 activity	Bonanzas: One-day or weekend event. Provides players with the environment to have fun whilst competing within a structured event.				Bonanza templates available from BADMINTON England's Competition & Events Department

Secondary Framework

Competition framework descriptor	Recommended competition	Level and location	Scheduling	Next steps in competition
<p>Key Stage 3: 11-12 years</p> <ul style="list-style-type: none"> Multi-sport competition (monthly, three sports) E.g. central venue, leagues in a range of sports, coaching and competition at secondary, hub or club sites 	<p>Pan-disability Festivals / Bonanzas One day or weekend event. Provides players with the environment to have fun whilst competing within a structured event.</p> <p>National Inter-Schools Badminton Championships</p> <p>Year 7, 8 & 9</p> <ul style="list-style-type: none"> Separate boys and girls competition, four players in each team Matches consist of two singles and three doubles, with each player playing in two games. <p>Year 10 and Year 11</p> <ul style="list-style-type: none"> Separate boys and girls competition, four players in each team Matches consist of two singles and three doubles, with each player playing in two games. 	<p>Hosted by primary/secondary school, sports college, leisure centre, badminton club.</p> <p>Ideally four courts but could use two and less options/numbers involved.</p> <p>Open Championships for any school player</p> <p>1st SSP Round: To be hosted by SSP for partnership schools.</p> <p>2nd County Round: To be hosted by a central SSP within the County.</p> <p>3rd Regional Round: To be hosted by a central SSP or Leisure Centre within the Region</p> <p>National Final: Central venue</p>	<p>Twice a year as and when appropriate to school</p> <p>1st Round: Oct - Dec</p> <p>2nd Round: Jan - Feb</p> <p>3rd Round: Feb - April</p> <p>National Final: May</p>	<p>Youth Games (run by CSP)</p> <p>Years 6 & 7 (max 4 boys, 4 girls per team)</p> <p><u>Format:</u></p> <p>1 Boys Doubles 1 Girls Doubles 2 x Girls Singles 2 x Boys Singles</p> <p>Years 8 & 9 (max 4 boys, 4 girls per team)</p> <p><u>Format:</u></p> <p>1 Boys Doubles 1 Girls Doubles 2 x Girls Singles 2 x Boys Singles</p> <p>Years 10 & 11 (max 6 boys, 6 girls per team)</p> <p><u>Format:</u> As above but to include 2 mixed doubles. The singles players may not take part in the mixed doubles.</p>

<p>Key Stage 3 and 4: 12-16 years</p> <ul style="list-style-type: none"> • Inter-school leagues and cup competitions within SSPs • Integrated competitive structure 	<p>National Inter-Schools Badminton Championships</p> <p>Year 7, 8 & 9</p> <ul style="list-style-type: none"> • Separate boys and girls competition, four players in each team • Matches consist of two singles and three doubles, with each player playing in two games. <p>Year 10 and Year 11</p> <ul style="list-style-type: none"> • Separate boys and girls competition, four players in each team • Matches consist of two singles and three doubles, with each player playing in two games. 	<p>Open Championships for any graded player</p> <p>1st SSP Round: To be hosted by SSP for cluster schools.</p> <p>2nd County Round: To be hosted by a central SSP within the County.</p> <p>3rd Regional Round: To be hosted by a central SSP or Leisure Centre within the Region</p> <p>National Final: Central venue</p>	<p>1st Round: Oct - Dec</p> <p>2nd Round: Jan - Feb</p> <p>3rd Round: Feb - April</p> <p>National Final: May</p>	<p>Youth Games (run by CSP)</p> <p>Years 6 & 7 (max 4 boys, 4 girls per team)</p> <p><u>Format:</u></p> <p>1 Boys Doubles 1 Girls Doubles 2 x Girls Singles 2 x Boys Singles</p> <p>Years 8 & 9 (max 4 boys, 4 girls per team)</p> <p><u>Format:</u></p> <p>1 Boys Doubles 1 Girls Doubles 2 x Girls Singles 2 x Boys Singles</p> <p>Years 10 & 11 (max 6 boys, 6 girls per team)</p> <p>Format as above but to include 2 mixed doubles. The singles players may not take part in the mixed doubles.</p>
<p>16-19 years</p> <ul style="list-style-type: none"> • Not for talented already identified as part of NGB talent programmes • 'Junior Varsity' to give this group an identity • Intra-mural competition within the learning community, e.g. schools, PE, sixth forms • Organised sport in core sports that match the secondary programmes • E.g. single venue festivals for a number of institutions during ring fenced time (Weds pm) 	<p>Sixth form and college leagues – leading to regional and beyond opportunities.</p> <p>Single venue competition format.</p> <p>Local winners to county competition</p> <p>Aim to tap into British Colleges competitions in future.</p>	<p>Ladders and leagues - to be held on own sites, leading to county based winners rounds.</p>	<p>Final in April. Build up from June of previous year.</p>	<p>Club and county activity</p>

Secondary Organisers Sheet

<p>Key Stage 3: 11-12 years</p>	<p>National Inter-Schools Badminton Championships</p> <p>Year 7, 8 & 9</p> <ul style="list-style-type: none"> • Separate boys and girls competition, four players in each team • Matches consist of two singles and three doubles, with each player playing in two games. <p>Year 10 and Year 11</p> <ul style="list-style-type: none"> • Separate boys and girls competition, four players in each team • Matches consist of two singles and three doubles 	<p>Ideally four courts over four hours</p> <p>1st round: SSP to host</p> <p>2nd & 3rd round: SSP, school, badminton club, leisure centre</p> <p>Final: BADMINTON England to provide facility</p>	<p>Badminton Development Officers (BDOs)</p> <p>Young Leader</p> <p>Competition Manager</p> <p>BADMINTON England</p> <p>Competition & Events Staff</p>	<p>Four courts, one net per court, one racket per player (different sizes recommended to player ability), 6-12 plastic shuttles per court.</p> <p>Match Score Sheet, Team Sheet, Rules & Regulations</p>	<p>Competition guide, spreadsheets, match score sheets available from BADMINTON England website.</p> <p>Badminton Junior Helper Award (BJHA) will support young leaders in all aspects of competition organisation, junior activity, etc which could mean involvement for BJHA students in each of the above age phases.</p>
<p>Key Stage 3/4: 12-16 years</p>	<p>National Inter-Schools Badminton Championships</p> <p>Year 7, 8 & 9</p> <ul style="list-style-type: none"> • Separate boys and girls competition, four players in each team • Matches consist of two singles and three doubles <p>Year 10 and Year 11</p> <ul style="list-style-type: none"> • Separate boys and girls competition, four players in each team • Matches consist of two singles and three doubles 	<p>Ideally four courts over four hours</p> <p>1st round: SSP to host</p> <p>2nd & 3rd round: SSP, school, badminton club, leisure centre</p> <p>Final: BADMINTON England to provide facility</p>	<p>Badminton Development Officers (BDOs)</p> <p>Young Leader</p> <p>Competition Manager</p> <p>BADMINTON England</p> <p>Competition & Events Staff</p>	<p>Four courts, one net per court, one racket per player (different sizes recommended to player ability), 6-12 plastic shuttles per court.</p> <p>Match Score Sheet, Team Sheet, Rules & Regulations</p>	<p>Competition guide, spreadsheets, match score sheets available from BADMINTON England website.</p> <p>Badminton Junior Helper Award (BJHA) will support young leaders in all aspects of competition organisation and junior activity which could mean involvement for BJHA students in each of the above age phases.</p>